

Back Pressure Regulator for stable sample flow to guarantee reliable and accurate measuring results

## Back Pressure Regulator

Back pressure regulator made of stainless steel SS316L with pressure indicator  
Sample in- and outlets with female threads ISO 1/8" equipped with Swagelok fittings for 1/4" tubing

One sample inlet, one overflow outlet and 1 to 4 outlets to the instruments  
The overflow outlet is also useful for taking grab samples

- Provides stable flow rates to instruments even if sample flow is not constant
- Acts also as a relief valve for up to 600 L/h short term
- Individual shut-off valves for each sample outlet
- Outlet pressure indicator (stainless steel)  
0 ... 2.5 bar
- No separate grab sample valves necessary

### Scope of Delivery:

Back pressure regulator with manometer as pressure indicator and 1, 2, 3 or 4 channels

Swagelok fittings ISO 1/8" thread on 1/4" tubing at sample inlet (angle 90°), sample outlet and overflow (straight) are included.

### Accessory:

Complete spare parts kit for back pressure regulators with 1 to 4 channels

For on-site maintenance or upgrade of back pressure regulators with 1 to 3 channels to the 4-channel version



Order Nr.	Back Pressure Regulator	A-82.58 __ .001
Number of channels	1 channel	1
	2 channels	2
	3 channels	3
	4 channels	4
Accessory:	<input type="checkbox"/> Spare Parts Kit Back Pressure Regulator	A-83.590.140
Other Swagelok fittings:	See <a href="http://www.swan.ch">www.swan.ch</a> for details and order numbers	

## Technical Data

### Back pressure block:

Stainless steel SS316L

### Back pressure membrane:

Butyl rubber, PVDF

### Sample temperature:

Continuous: 0–70 °C

Short time max. 90 °C

### Sample flow:

Per outlet: 0 - 25 L/h

Max. overflow continuous: 120 L/h

Max. overflow short time: 600 L/h

### Pressure:

Sample outlet pressure: 0.5 - 0.6 bar

Outlet pressure indicator: 0 - 2.5 bar

### Process connection:

Inlet: ISO female thread 1/8"

Outlet: ISO female thread 1/8"

Overflow: ISO female thread 1/8"

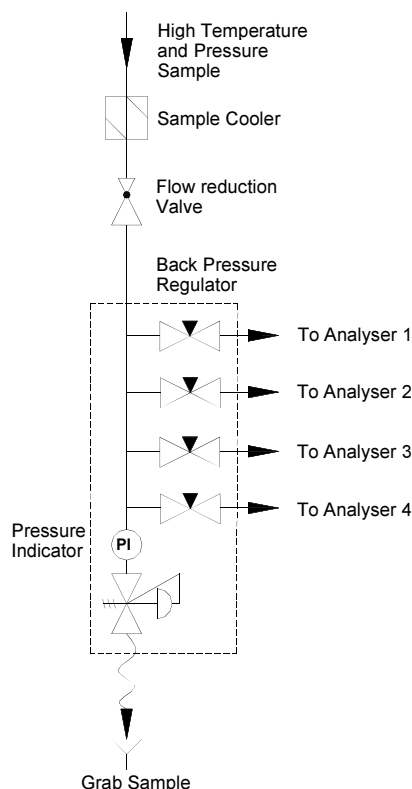
All process connections are equipped with Swagelok fittings ISO 1/8" thread on 1/4" tubing.

### Dimensions:

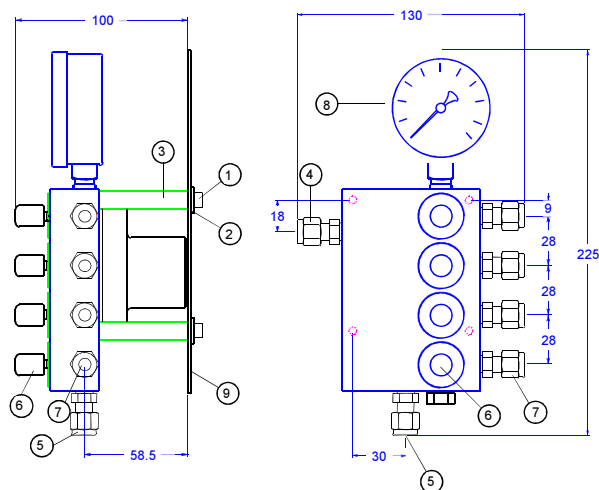
Height: 225 mm

Width: 130 mm

Depth: 100 mm



## Dimensions



1. Hexagon socket screw, M5 x 60 mm
2. Washer for M5
3. Distance sleeve  $\varnothing 5.3 \times \varnothing 15$ , length 50 mm
4. Sample IN
5. Sample overflow and grab sample, atmospheric pressure
6. Shut off valve
7. Sample OUT to analyzers
8. Back pressure gauge 0 – 2.5 bar
9. Mounting panel

