



# Wastewater

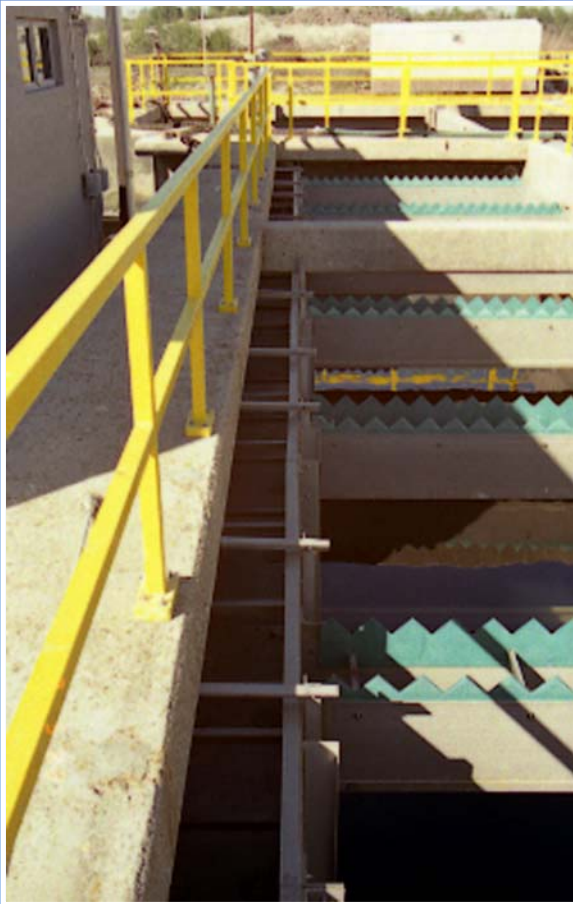
Winter 2003

# *Baffles*



- 12" & 24" Baffle
- Water Plants
- NSF
- EXTREN® Structural Members

# Weirs/Baffles



- Cut from EXTREN<sup>®</sup> plate
- Any tooth pattern
- Lengths up to 20'
- Thickness standard - 1/4"
- Color Std or Aqua

# *Weirs*





# *Flight Channels*



- Available in 6" & 8"
- Listed in EXTREN<sup>®</sup> Price List under Special Composite Shapes
- Sales to OEM's

# COMPOSOLITE™



- Special Design Covers
- Std Resin or can be NSF



# **EXTREN®**



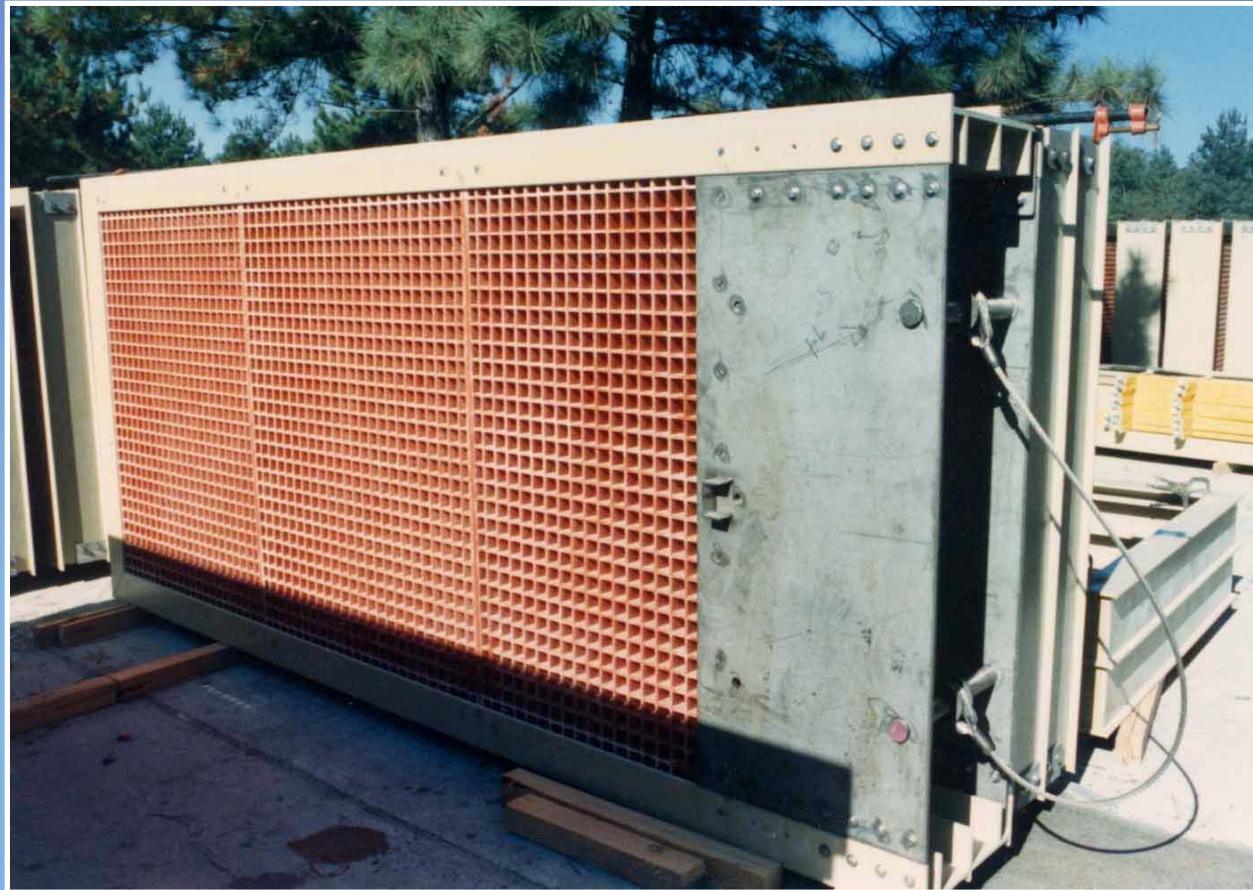
- Available as NSF Composite Resin



# ***DURADEK®/DURAGRID®***



# ***DURAGRATE®***



# ***SAFRAIL®***



***Square Handrail***

***Round Handrail***



# ***SAFPLANK®***



- Available as NSF Composite Resin